



Logistics

# NAVISION AXAPTA®

## Warehouse Management Overview

### *Standard Module*

- Item registration and placement
- Five inventory dimensions to specify exact location of items in inventory
- Serial number and batch number control
- Chaotic storage

### *Advanced Module*

- Arrival journals
- Automatic location selection
- Warehouse zones
- Shipments
- Transport
- Pallet types
- Pallet transport
- Store zones and areas
- Advanced picking



## | Warehouse Management

### **Presenting the Navision Axapta Warehouse Management Solution**

For many companies, efficient warehouse management is a crucial aspect of logistics. The Navision Axapta Warehouse Management solution provides all the functionality you need to comprehensively control items in warehouses.

The Navision Axapta Warehouse Management solution is divided into two modules: the standard module and the advanced module. The functionality in each module is listed in the left column.

Combined, the modules provide capabilities for the following areas:

- Receiving items from external suppliers as well as internal sources such as production departments
- Placement of items in warehouses
- Picking of items prior to shipping
- Packing items for shipment or transfer

To help maximize efficiency throughout the entire warehouse-management cycle, the Warehouse Management solution is linked with other Navision Axapta modules, including

- Logistics
- Inventory Management
- Production
- Sales orders
- Purchase orders

**NAVISION®**  
*The Way to Grow*



The Navision Axapta Logistics module is required for using the Warehouse Management module.

All together, the Warehouse Management modules are ideal for companies that want to optimize logistics processes, reduce operational costs, and be more responsive to customer demands.

### **Easier processing of received items**

The Warehouse Management system makes it easy to identify, label, position and reposition goods that are received. All activities are recorded in journals so that a complete history of actions and item identifiers can always be recreated using an audit trail.

### **Serial and batch number control**

The system's support for serial and batch number control makes it easy to stamp inventory or individual items with a number linked to shipments and deliveries. As many serial/batch number groups as necessary can be created for automatic numbering of the SKUs (Stock Keeping Units).

The serial/batch number group is specified on the main inventory transaction, and can be alpha-numeric with the next value assigned consecutively or based on a template.

### **Establish high- and low-priority storage areas**

When items arrive, the Warehouse Management system provides extensive flexibility for where to place goods. The system can handle division of a warehouse into zones with different storage purposes. For example, there can be a special zone for items requiring very low temperatures. Or, a warehouse can be divided into zones according to the rate of turnover

for the different items. This includes "hiding" low-priority items at the back of the warehouse.

Warehouse locations can be specified using five levels: warehouse, aisle, rack, shelf and bin. For each location, special parameters can be set up, such as height of the space, pallet type, etc. Locations temporarily out of use can be blocked, so items are not sent to broken shelves or racks that are in process of being re-built.

### **Support chaotic storage**

When items or goods arrive at the warehouse, the Warehouse Management system can make a proposal for the optimal storage location. This is based on zones and location characteristics compared with characteristics of the items. In this respect, you are able to work with chaotic storage.

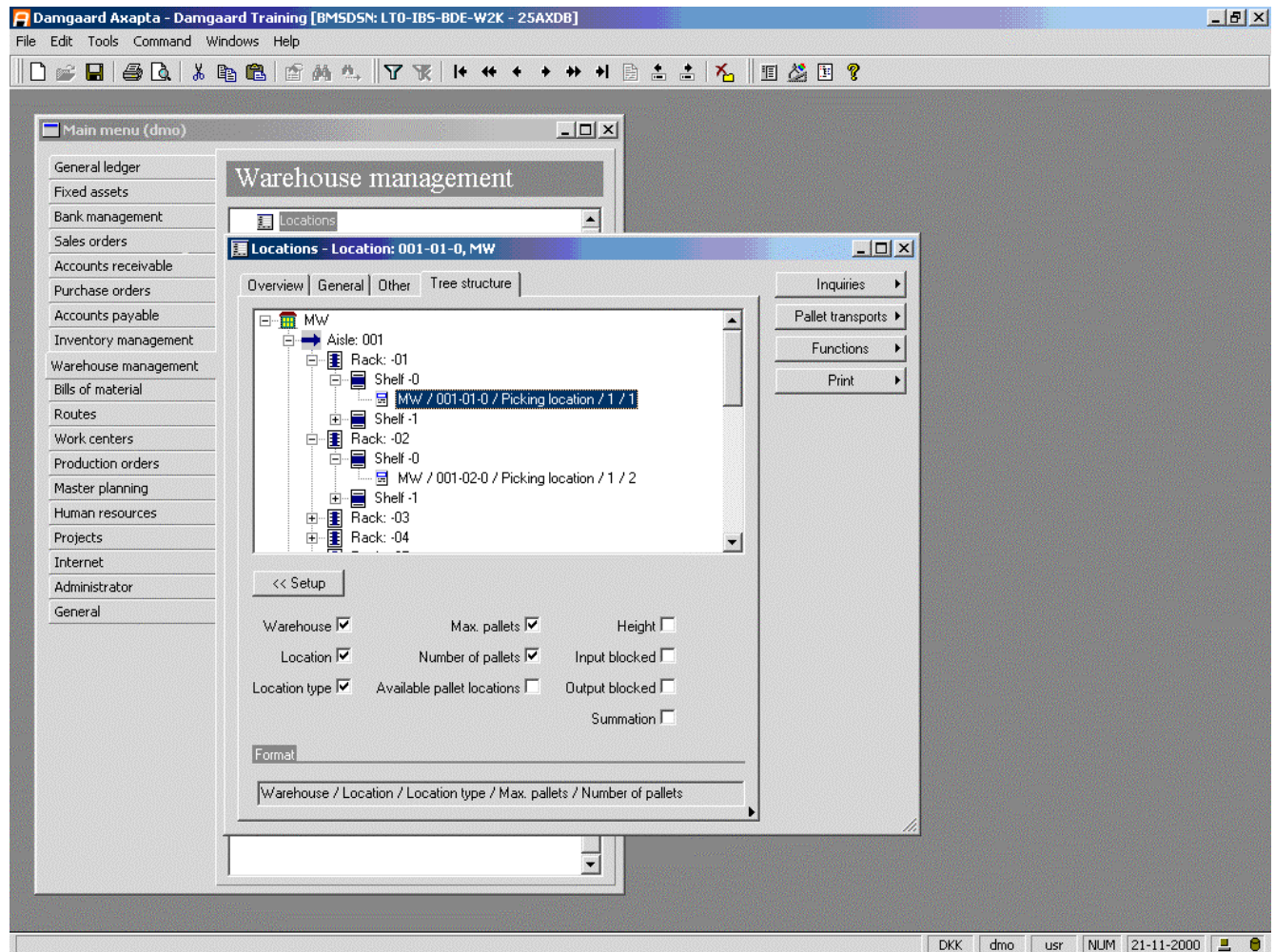
### **Rapidly turnaround for received goods**

Sometimes customers want to buy a product that, according to your system, has not yet arrived (been registered) in inventory. With the assistance of the Warehouse Management system, goods can be registered as soon as they arrive at your site. This means that the goods are visible in the system and that they are available for sale — or for production — even though they haven't been placed in inventory yet.

### **Locate items quickly**

The Warehouse Management system provides a number of capabilities that make it quick and straightforward to find items that have been placed in

**NAVISION<sup>®</sup>**  
*The Way to Grow*



Using the Warehouse management functionality, you get complete overview of your warehouse - in aisles, racks, shelves and bins.

a warehouse. These capabilities are used in connection with picking, packing, and inventory management as well as with the repositioning of goods.

### Inventory Dimensions

It is of course necessary to be able to find items in stock. Depending on the size of the inventory and the type of items stocked, the level of detail needed in inventory records will vary. With Navision Axapta, for each item group or for each specific item, you can decide whether to include information for one or more of the following five dimensions:

- Warehouse
- Batch number (identification of a quantity of related articles)
- Location (shelf, bin, etc.)
- Pallet ID (item carrier ID)
- Serial number (unique identification of one item)

Inventory dimensions enable you to determine the exact location of a specific item. Inventory dimensions are also a very powerful tool for serial- and batch number tracking. The flexible set-up of dimensions

**NAVISION®**  
The Way to Grow



Logistics

enables the value of each of these five dimensions to be shown in forms. This could be used, for example, to get an overview of on-hand items.

When entering a sales order, for example, you can reserve a specific item or an item from a specific location or a specific batch. This reservation is then recognized by all functions in Navision Axapta, such as inventory counts, planning of production, and so on.

### **Faster picking and packing**

When it comes to picking and packing, the Warehouse Management system is designed to handle internal transfers as well as external shipments.

Shipments can be defined as a collection of items to be packed in the same container, or to be shipped at the same time. A shipment can also include bills of materials, in order to send items from the warehouse into production.

### ***Advanced picking***

Based on the shipment, a picking route is created in Navision Axapta. The route takes into account the different parameters set up for the warehouse, such as zones, height of locations versus using a truck or picking manually, which way to drive the truck in the warehouse, and so on.

When creating the picking route, the system can take into account several orders in one route (batch picking). This enables better use of pallet loads and is a very cost-effective way of managing the warehouse.

Copyright © 2001 Navision a/s (NavisionDamgaard a/s), CBR No. 76 24 72 18. The trademarks referenced herein and marked with either ™ or © belong to Navision a/s (NavisionDamgaard a/s) or Navision Development a/s. The names of actual companies and products mentioned herein may be the trademarks of their respective owners. No part of this document may be reproduced or transmitted in any form or by any means, whole or in part, without the prior written permission of Navision a/s. Information in this document is based on Navision Axapta version 2.5 and subject to change without notice. All rights reserved.

### **Address:**

[www.navision.com](http://www.navision.com)

**NAVISION®**  
*The Way to Grow*



Logistics