

Unlock the Power of One



**Advanced Technology
for ERP and E-Business**

NAVISION AXAPTA®

NAVISION®
The Way to Grow

Contents

Technology for E-Integrated Enterprises	Page 3
Harness the Power of One	Page 4
Integrate Everything	Page 5
Leverage Web Tools	Page 6
Scale as You Grow	Page 7
Adapt to Change	Page 8
Upgrade with Ease	Page 10
Leverage the Microsoft Platform	Page 11
Experience the Joy of Work	Page 12
Prepare for the Future	Page 13
Glossary	Page 14
Technical Requirements	Page 15

“We chose Navision Axapta because it has the most future-oriented technology and because it is flexible enough to support our wide and varied range of business activities.”

Tore Lindbak, Managing Director,
Lindbak, Norway



Advanced Technology for E-Integrated Enterprises

To make a successful transformation to e-business, enterprises need an agile technology platform. Starting with versatile technologies like MorphX™ Development Suite, Navision Axapta provides a range of unique capabilities for harnessing the benefits of e-business and cost-effectively adapting to changing conditions.

As a technology platform, Navision Axapta is ideally suited for enterprises looking to automate core business processes using an ERP system and then extend those processes to customers, partners, suppliers, and employees.

But it's important to understand that not all enterprise technology platforms are the same. Selecting the wrong platform can lead to cost overruns and missed business opportunities. With Navision Axapta, however, the underlying technology is what makes the difference. Why? Three key reasons:

Flexibility — from the beginning, Navision Axapta was designed as a three-tier architecture. This includes a number of advanced techniques to cleanly separate the business logic from the presentation interface and the application data. As a result, you can access the same business logic using the interface of your choice — browser, application client, machine-to-machine, or mobile device.

The Design Philosophy

This brochure describes the technical capabilities of Navision Axapta™. As you will see, the system's innovative "power of one" design philosophy enables enterprises to manage change in a controlled manner while unlocking the benefits of e-business.

E-business Ready — Navision Axapta includes everything you need for e-business. The system's web application toolbox lets you rapidly build applications that inherently reuse core Navision Axapta functionality and core data. What's more, the system supports important e-business technologies like XML, WAP, and the Application Service Provider (ASP) paradigm.

Power of One — a fundamental design philosophy for Navision Axapta is this: one toolset, one source code, one set of business logic, one database. Whether it's application customizations at the subsidiary level, department level, or with individual users, Navision Axapta puts the ability to adapt in the hands of the company itself. This simplicity makes it easy and less costly to customize and upgrade Navision Axapta applications.



Harness the Power of One

To be truly successful in business, you must first build efficient internal processes and then extend those processes to customers, partners and suppliers. With its design principal of "one set of business logic, one database, one source code, and one toolset." Navision Axapta is uniquely positioned for automating both internal and external processes. At Navision, we think of this as "the power of one."

The Need to Reuse Resources

When it comes to selecting a business platform, one of the first decisions is to choose either an add-on e-business application or a single system (like Navision Axapta) that combines internal processes with e-business processes. Selecting an add-on application presents a number of disadvantages. These include extra maintenance, redundant data, redundant business logic, the need for more than one development toolset, and reliability issues related to database synchronization.

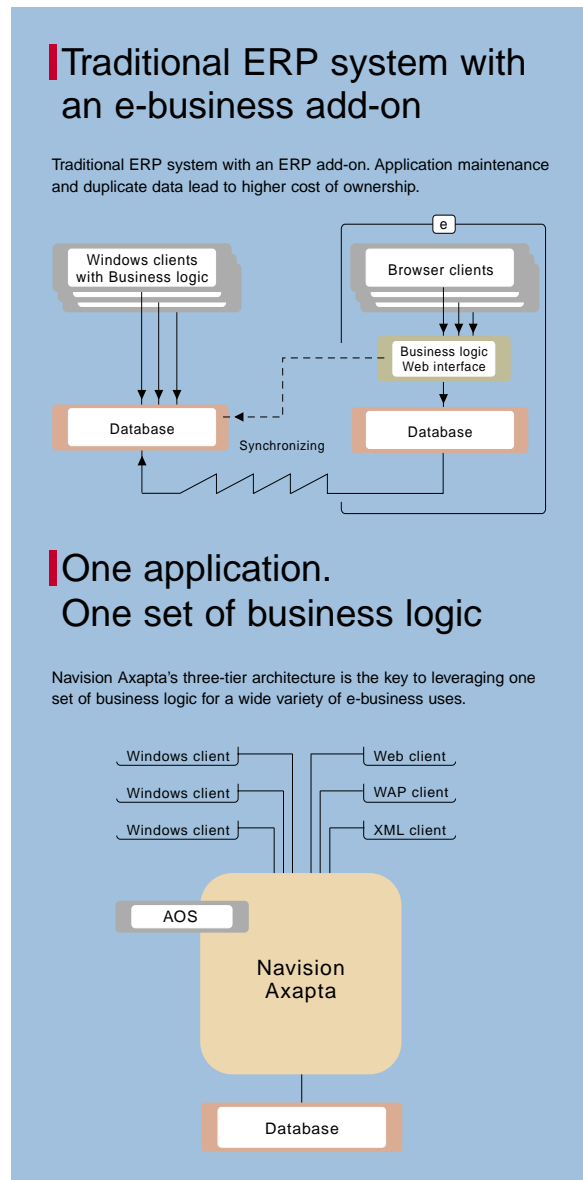
The Power of One

Navision Axapta enables companies to simplify and cost-optimize the process of building powerful e-business applications. A key reason is the system's three-tier architecture that cleanly separates the business logic from the presentation layer. This lets companies maintain one set of business logic and extend this logic in all directions — to customers via the web, to suppliers via extranet services, to employees via WAP technology, to e-commerce marketplaces using XML, and so on.

Reap Key Benefits

Important benefits provided by Navision Axapta's "power of one" approach include:

- Lower development and maintenance costs
- No redundant data
- No redundant business logic
- Greater responsiveness to change
- Easy-to-upgrade applications
- Ability to harness emerging technologies like WAP and XML



E-business applications should strive to reuse business logic, data, and in-house expertise.

Integrate Everything

Navision Axapta provides an ideal environment for companies looking to leverage information technology as a competitive advantage. Not only can such companies move quickly using the extensive ready-to-run functionality delivered with Navision Axapta, but companies can also integrate different business systems with Navision Axapta to meet overall enterprise objectives. Navision Axapta makes integration easy in a number of ways. First, the system provides wide-ranging support for Microsoft's COM standards via the Business Connector. This means that any COM-compliant application can readily communicate and transact with Navision Axapta. Second, MorphX Development Suite, including the web application framework, provides a number of tools that simplify integration. And third, Navision Axapta supports integration for several emerging e-business technologies, such as XML.

The COM Standard

- Essential for Integration

With Navision Axapta as part of your IT infrastructure, you can cost-effectively integrate a vast selection of applications compliant with the Microsoft environment. Links that are established between Navision Axapta and COM-compliant applications are totally transparent to users. Application functionality can seamlessly combine Microsoft Word, Outlook, Excel, and many other Microsoft applications with Navision Axapta. This is achieved without the user even having to open Navision Axapta on the local PC.

Taking Advantage of the Internet

The Business Connector is also a vital tool for web applications that are using information from Navision Axapta. This is of course true for web applications built with Navision Axapta's own framework, but equally true for any other web-based application communicating and transacting with Navision Axapta. This provides perfect synergy between your back-office ERP solution and your front-office web applications.

XML Integration

XML is a vital business-collaboration standard. To support customers with integration requirements, Navision Axapta provides an XML interface. Using this interface, Axapta applications may read and write XML documents and engage in intelligent communication with other XML-aware programs. This technology enables you to for example set up direct connections to your trading partners, or participate in B2B trading exchanges on the web.

"Our challenge was to overcome our diverse information systems. We had grown so rapidly that our systems were not interconnected. We had separate systems at the central office to manage purchasing, production, and sales order entry."

Lou Zuiker, Manager of Research and Development, Northern Micro, Canada



Leverage Web Tools

When it comes to web applications that span your entire enterprise, Navision Axapta delivers a key advantage: all web applications are built on the same business logic that drives your client-based applications.

What's more, Navision Axapta provides a comprehensive framework for rapidly building, deploying and maintaining web applications. The web framework includes a number of ready-to-run web applications, such as customer self-service, plus all the tools you need for building and customizing web applications.

Part of MorphX Development Suite, the web tools include a visual HTML editor and cascading style sheet editor as well as a range of prebuilt web forms, web menus, and web reports.

In addition, the framework includes a web-site wizard and web-application wizard that give you total control of layout and business logic.

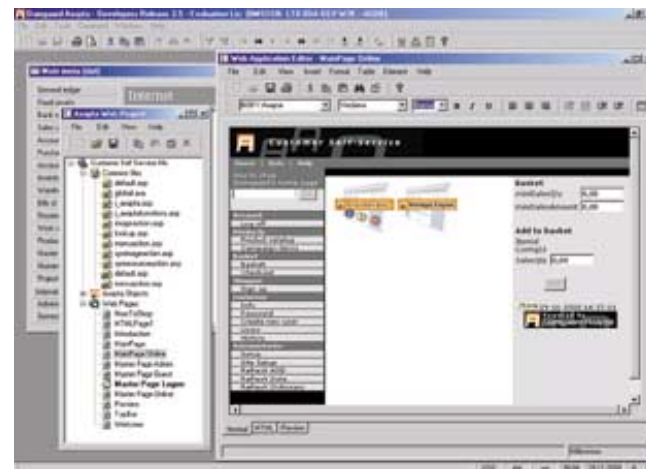
The framework is designed to be as customizable and expandable as possible, so that you can easily develop the solutions that best meet your particular business requirements.

Speed and Ease

when Building Web Applications

Building web applications is simplified thanks to the Navision Axapta web wizards. These wizards are targeted at both web programmers and non-technical personnel. The wizards' structured approach, combined with other resources such as web forms, help assure consistent design and reliable functionality. Web tools enable you to quickly build a wide variety of applications that leverage the data and business logic in Navision Axapta. For example, an application can be quickly built that publishes select sales data for management on your intranet. The web publisher can be easily programmed to update the data on a daily basis.

Using the web application wizard, a new application that uses core Navision Axapta functionality can be built in minutes.



Navision Axapta web tools let you rapidly design, build and maintain web applications.

“The whole process was to prepare us for e-business. We want our customers to know where an order is at every step. Now we have a screen that shows exactly where an order is in the process.”

Amir Bagherlee, Vice President of Operations,
Louis Poulsen & Co., USA

Scale as You Grow

Navision Axapta ensures easy scalability in a number of ways. First, Navision Axapta supports both two-tier and three-tier client/server application environments. This flexibility lets you build one enterprise system that consists of either two-tier installations or threetier installations, or both.

Second, Navision Axapta Object Server (AOS) provides extensive scalability for enterprises that want to harness the power of a distributed, three-tier system. Again, one of the strengths of Navision Axapta in such scenarios is that even though it's distributed, it's still managed and enhanced as one whole system. This means maximum value for your IT investment.

Scalability via Distributed Applications

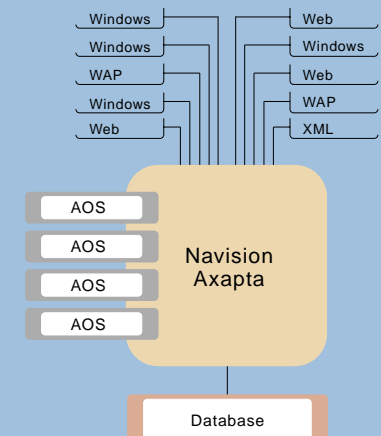
As a dynamically scalable environment, Navision Axapta enables you to increase the number of users, add more machine power or install multiple AOS's, expand your database capacity, and leverage the power of the Internet. The key to this scalability is the advanced architecture designed to scale horizontally or vertically in a multitude of different configurations.

AOS is specifically designed to leverage the business benefits of Navision Axapta in distributed networking environments. As a result, Axapta Object Server lets you optimize a Navision Axapta system for the best performance, bandwidth utilization, security, and cost-of-ownership.

What's more, with Navision Axapta you do not need middleware. This translates into a simpler, easier-to-maintain system configuration. The bandwidth requirements for communication between an AOS and clients is modest. This translates into lower operational costs.

One set of business logic ensures easy scalability

For "pure" scalability, multiple AOS's can be added to the system without the need for segmented or redundant business logic. The result? Maximum scalability while maintaining only one set of business logic.



The Axapta Object Server is designed for distributed applications in a networked environment.

Your Choice of SQL Databases

Navision Axapta uses Structured Query Language (SQL) syntax. This provides a free choice between SQL database management with the leaders — Microsoft SQL Server (current and future versions) and Oracle. Navision Axapta complies fully with these system standards in order to ensure direct access and top performance. This enables you to employ a large number of standard maintenance and backup tools.



Adapt to Change

The ability to quickly adapt to change should be in the hands of those who use and manage the system. To make this a reality, Navision Axapta provides four unique ways to adapt to business requirements and individual preferences. These four capabilities are described below.

Manage Functionality using Feature Keys

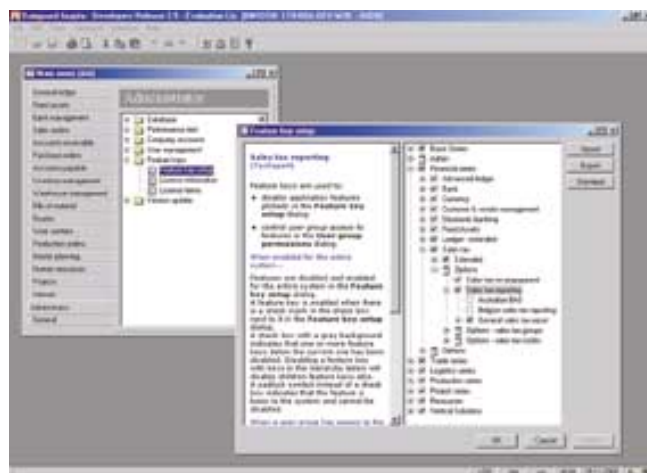
Feature Keys is a capability that lets system managers enable and disable functionality in Navision Axapta. For example, using Feature Keys, an administrator can give different users and groups of users access to different functionality.

Feature Keys can be used for simple, on-the-fly changes and for more sophisticated, cross-departmental changes. All together, Feature Keys puts the power to adapt directly in the hands of individual managers, and system administrators.

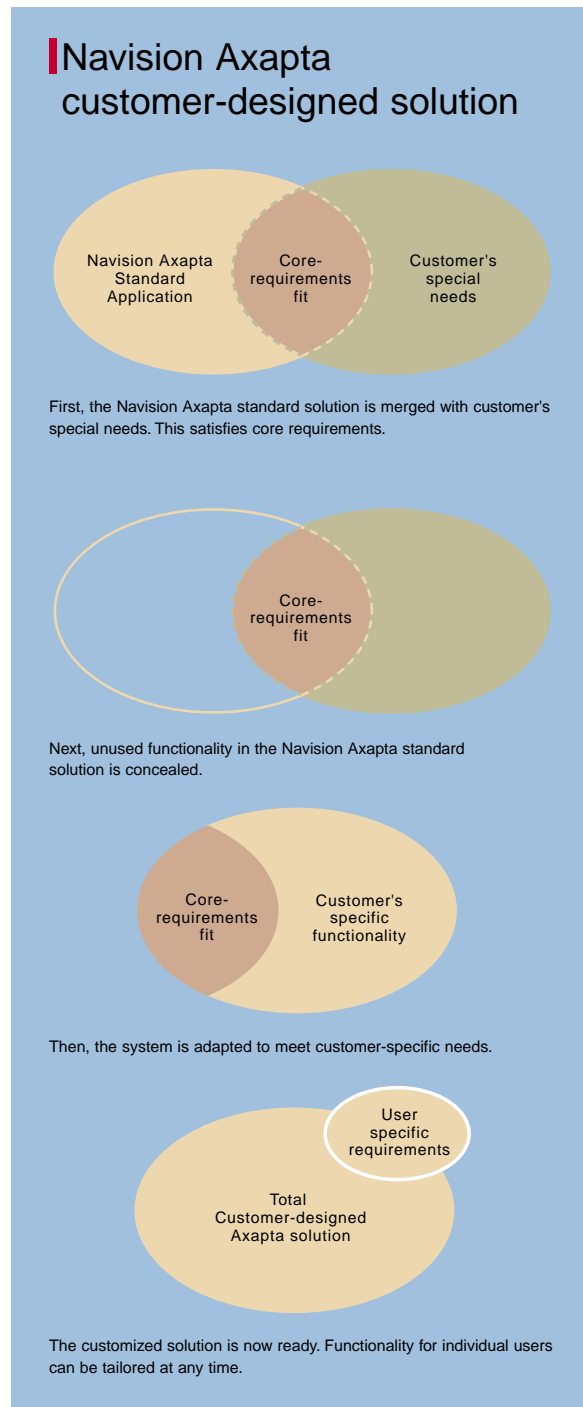
Work Faster with IntelliMorph

IntelliMorph is a technology that makes it hassle-free to modify forms and reports. For example, IntelliMorph makes it possible for users to hide and show fields on a form. Simply right click a field to hide it or use "show all" to display all fields. Better yet, IntelliMorph takes care of reformatting the form. This lets individual users safely and swiftly rearrange fields to best suit individual work preferences.

Feature Keys are only a mouse click away.



Using Feature Keys, even complex functionality can be enabled or disabled with a single mouse click.



IntelliMorph also makes it possible to quickly build and redesign screens, forms, and reports. Field labels can be modified without disturbing field data or underlying business logic. For example, you can switch languages on an invoice form and IntelliMorph automatically resizes the field labels to fit the words. This includes web-based forms. These are just a few of the many time-saving advantages made possible by IntelliMorph.

Leverage Functionality with MorphX

When extensive changes to functionality are required, MorphX Development Suite — a multi-purpose toolbox — can be used. MorphX Development Suite enables system administrators and programmers to modify Navision Axapta functionality without manipulating the underlying business logic. The beauty of MorphX Development Suite is that it's one toolbox for making many different types of changes. It's also a visual environment that uses drag-and-drop technology. Using MorphX, the entire Navision Axapta application is accessible in an expandable "tree" structure. Not only can desired tree-items be quickly located, but it's also easy to reuse existing pieces of functionality.

The MorphX Development Suite greatly speeds up the task of customizing Navision Axapta to meet site-specific and enterprise-specific requirements. MorphX includes the IntelliSense help function for quick access to online guidance. Using MorphX, even complex requirements can be met in just minutes or hours.

Rapidly accommodate any new demands customers may make.

Create New Business Logic with X++™

When complex requirements call for new business logic, Navision's own object-oriented language, X++, can be used. X++ is one language that serves many purposes. It's a database language, scripting language to interface to the database, language for building reports, language for building forms for the user-interface (for both traditional clients and web applications), and so on. X++ even includes a help-system language. Few, if any, ERP systems provide such a versatile tool.

Navision Axapta X++ radically reduces the amount of code necessary to deliver rich functionality. Less code means less risk of error and faster performance. What's more, object orientation increases the ease and speed of any development task. No other system offers the openness and adaptability as Navision Axapta.

"Now that we have the development environment included with Navision Axapta, even I, with no programming background, can easily add on a new product variation."

Jacob Torén, Chief of Finance, Colorcraft, Sweden



Upgrade with Ease

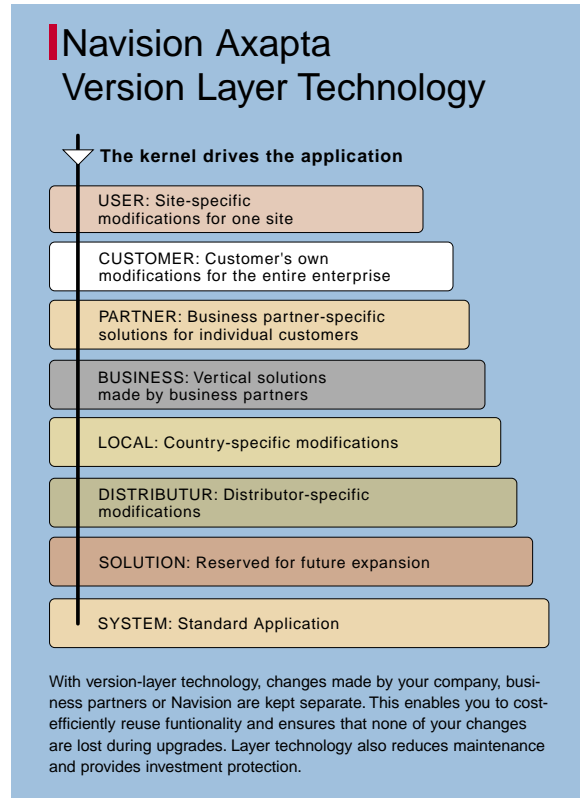
Many companies can gain competitive advantages by adopting new technologies as they emerge and become widely used. But the cost to do so should not be prohibitive. Thanks to Navision Axapta's version layer technology, it is hassle free and cost-effective to migrate to new versions of the base technology.

Navision Axapta Version Layer Technology

Customizations made by a Business Partner or customer are maintained in separate upper layers, without changing the original application code in any way. Changes to upper layers take precedence over lower layers' functionality. This way, you have full control over modifications. If needed, you can roll back to the standard application at any time. In addition, maintenance enhancements can be applied to any layer in a safe and uniform manner. By maintaining changes in independent layers, Navision Axapta retains each customization in its original form. Those who benefit from customization benefit from maximum flexibility and security.

Upgrade Support Tools

The comparison tool and upgrade project tool that accompany an upgrade CD enable you to select the customized processes that you want to retain in the new version. You can compare objects within the basic application layer (SYS) and the other layers to see what has been altered and if the alteration affects the customization you made to the same objects. Typically, you only have to "approve" the changes made to the SYS layer and merge them with your own customizations. This makes it easy to decide which functions and changes you need to retain in the upgraded version.



Previously customized processes are preserved during upgrades. Version-layer technology lets you monitor what has been changed, where it was changed, and from where changes originated.

Automated Upgrades

When upgrades are released, you receive a new product version. No need to worry about moving countless lines of code to the right places in the new version. Just run the installation program and the files will be copied to the correct locations. Then you can run the compare tool.

To simplify this process, an optional wizard guide you step-by-step through all the procedures.

Leverage the Microsoft Platform

Navision is fully committed to supporting existing and future Microsoft products, standards, and initiatives. As proof, Navision is consistently among the first vendors to support new Microsoft products as they become available. One example is Navision's early certification for Microsoft Windows 2000.

Our certification to use Microsoft logos is your guarantee that Navision Axapta is not only compatible with Microsoft products, but also gives you a consistent look and feel. These logos guarantee that Navision Axapta has been stringently tested to ensure complete compliance to Microsoft products and technology.

Low Cost of Ownership

Applications that bear the Microsoft logo boost personal productivity. They minimize the need for helpdesk support simply because they use conventions found in Microsoft programs. Navision Axapta is easy to use for those who are already accustomed to Microsoft software.

More Reliable and Manageable

Microsoft certification translates into greater reliability and manageability for Navision Axapta applications. With this, you can be assured of better co-existence of applications as well as robust, self-repairing installations that minimize conflicts among shared components.

The result is fast acclimatization, reduced training, and reduced maintenance costs.

Supports Advanced Technologies

Navision Axapta supports a number of advanced Microsoft technologies, including capabilities available in Microsoft Windows 2000. These include OnNow™ technology for intelligent power management, selfrepairing technology for smoother installations, and component sharing technology for better application reliability.

"It took just 8 hours in total - to unpack, build and install the hardware along with the installation of Windows NT, Microsoft SQL Server and Navision Axapta."

Wolfgang Puttinger,
Administration and IT Manager, Lederbauer, Austria



Experience the Joy of Work

Navision offers more than just technology. An equally important part of our objective is creating Joy of Work.

- Joy of Work comes from being able to perform a task without being distracted by other matters.
- Joy of Work comes from the feeling that your tools make you better at what you are already good at, no matter what your role in the enterprise.

Our aim is to help people perform their work quickly, easily, and in a goal-directed manner. As a result, we placed technology where it should be: out of sight, out of mind, and harnessed in the service of people. As e-business becomes more widespread, and enterprises increasingly use the web to interact with customers, suppliers, employees, and peers, the Joy of Work becomes even more important.

“Right off the shelf, Navision Axapta offers what we need in order processing and tracking, multicurrencies and languages. For those things that do need customisation in the future, Navision Axapta is easy to adapt with its leading-edge technology.”

Alan Baldwin, Chief of European Operations,
HA-LO, Belgium

Managers and employees enjoy easy, fast access to vital and understandable information to enhance decision-making.

- The graphical user interface ensures an easy transition to Navision Axapta for those users already familiar with a Microsoft Windows standard navigational environment.
- Navision Axapta Feature Key functionality allows users to personalize their working environments. Users can tailor their screens to provide better overviews which increases productivity and Joy of Work.
- Navision Axapta is designed specifically for international, multi-site corporations by supporting multiple languages. For example, a Dutch comptroller can go to your subsidiary in Spain and work on their local version of the system, choosing the Dutch language with just a click of the mouse.

Users benefit from comprehensive monitoring and control of inventories, customers, suppliers and their own delivery schedules. At the same time, accounts departments reap the rewards of straightforward and up-to-the-minute financial control and administration.



Prepare for the Future

Going forward, we recognize that enterprises look to implement e-business technologies as a way of optimizing costs and building stronger relationships with customers, partners and suppliers. Navision is the ideal partner for any enterprise seeking to leverage the Internet, web applications, mobile technology, and new industry initiatives.

A Vision that Starts with Our Customers

At Navision, we have carved out a vision that starts with our customers. So when it comes to emerging technologies, Navision is deeply committed to putting our customers first.

Whether it's new technologies like XML and WAP, a paradigm shift like the Application Services Provider model, or the Microsoft.net initiative, you can expect that Navision will be there in the best interest of our customers. What's more, as our customers increasingly adopt collaborative applications, we believe the ability to combine ERP, e-business, customer relationship management, and supply-chain management on the Navision Axapta core system provides powerful competitive advantages not attainable elsewhere.

Extensive Expertise

Navision Axapta is proof of our extensive expertise. No existing development language supported the technological concept we sought to create, so for Navision Axapta we developed a new development suite based on our own object-oriented programming language: X++.

X++ combines the best of many worlds — Java, C++, and SQL syntax. X++ gives Navision Axapta a manageable amount of code and straightforward development tools, making it remarkably easy to adapt, upgrade, and maintain customized processes. A primary design goal with Navision Axapta is ease of use for all types of users.

- IT managers are attracted to the openness of the system and its ability to support changes in company processes. Navision Axapta automates time-consuming routines and provides legacy systems with a uniform user interface.

- Programmers appreciate Navision Axapta's unique, object-oriented development environment.
- Managers, executives, and all employees discover a user friendliness and adaptability to change.

The Power to Manage Change

Via innovative technologies like Axapta Object Server, Navision Axapta delivers a range of advantages that you won't find elsewhere. Above all, Navision Axapta puts the power to manage change in the hands of ERP and e-business architects. As the e-business era emerges, this is a crucial advantage that will help you take your business in the direction you want to go

Instead of struggling with technology, users have time to focus on their primary tasks.

Glossary

Axapta Object Sever: Navision Axapta server software that is optimized for three-tier environments that leverage the benefits of web applications.

Business Connector: Ensures that Navision Axapta is open to, and accessible from, all COM-compliant products, including Microsoft products, web solutions, etc.

COM/DCOM: Common Object Model/ Distributed Common Object Model. This Microsoft standard ensures straightforward and seamless integration with Microsoft and other COM-compliant applications.

Feature Key: A functionality in Navision Axapta that enables you to add, remove or hide functions simply by pressing a key.
Genuine object-oriented language: There is a difference between simply object-oriented and genuine object-oriented languages. A genuine object-oriented language employs discrete objects – predefined building blocks, if you like – that can be used again and again. Genuine objects are set apart from program code and have their own properties that can be set or read, depending on their purpose, without affecting other objects or code.

IntelliMorph: This technology ensures that new fields in Navision Axapta are sized and placed appropriately and attractively on all relevant screens throughout the enterprise solution, and that they adhere to the graphical standards of the solution as a whole.

IntelliSense: A Microsoft standard help file containing context-sensitive support for developers and programmers.

MorphX Development Suite: A series of tools dedicated to the development of Navision Axapta solutions.

MorphX: Navision Axapta's object-oriented development environment based on the company's X++ programming language.

Objects: Fragments of program code that can be used again and again. This limits the amount of code to be maintained and reduces the risk of errors.

OLAP: "On-line Analytical Processing," a technology that enables management to reference and analyze data at all levels and in all directions in Navision Axapta.

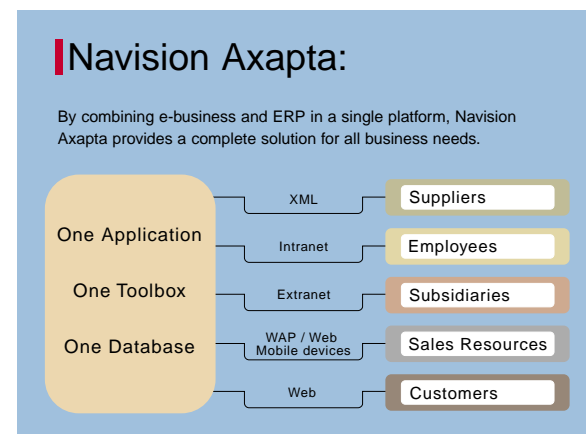
SQL: "Structured Query Language," a special syntax used to extract, analyze and present data from a database by creating queries. SQL syntax is an integral part of Navision Axapta's X++ programming language.

Three-tier solution: Distributed application architecture that supports traditional clients and web clients. This is the key to savings and flexibility, enabling your company to run existing applications at a lower cost.

Version-layer technology: Structure that defines separate, protected levels within Navision Axapta where modifications are made. This ensures that Navision, a Business Partner or the client company itself, can safely and easily enhance and upgrade Navision Axapta applications.

Wizard: A program that guides the user step-by-step through a process, typically the installation of a program or the set-up of company information like new inventory items, new staff, new reports, etc.

X++: The underlying Navision Axapta programming language, X++ was developed specifically for the product and is based upon Java, C++ and SQL syntax.



Minimum System Requirements

For the Client:

Hardware:

2-tier and fat-client:

200MHz Pentium Pro II processor with 64MB RAM or more.

Thin-client:

133MHz Pentium Pro II processor with 32MB RAM or more.

General:

Any commercially available machine (from latest October 2000) with an Intel or AMD processor will suffice if it fulfils the above memory requirements.

Operating System:

Windows 2000 or Windows NT 4.0 with Service Pack 3 (SP3) or higher. Windows 95 with OEM Service Release 2 (SR2), Windows 98, or Windows Me. BackOffice Client ODBC Version 3.51.0000 (handled by the installation program). Internet Explorer 4.0 or higher.

For the Server:

Please verify that your server configuration and sizing meets the recommendations set forth by the Sizing Tools provided by Navision and its partners.

Database:

Microsoft SQL Server 7.0, Microsoft SQL Server 2000 or Oracle 8

**You will find
Navision
here**

Australia
Austria
Belgium
Canada
Czech Republic
Denmark
Finland
France
Germany
Iceland
Italy
Lithuania
Norway
Poland
Portugal
Russia
Singapore
Slovenia
South Africa
Spain
Sweden
Switzerland
The Netherlands
USA
United Kingdom

Copyright © 2001 Navision a/s

(NavisionDamgaard a/s),

Frydenlunds Allé 6, DK-2950 Vedbæk, Denmark.

The trademarks referenced herein and marked with either TM or ® are either trademarks or registered trademarks of Navision a/s (NavisionDamgaard a/s) or Navision Development a/s.

The names of actual companies and products mentioned herein may be the trademarks of their respective owners.

No part of this document may be reproduced or transmitted in any form or by any means, whole or in part without the prior written permission of Navision a/s. Information in this document is based on Navision Axapta version 2.5 and subject to change without notice.

Any rights not expressly granted herein are reserved.

Navision a/s is a leading global provider of end-to-end e-commerce and collaborative business solutions to the mid-market. Navision has a global customer base of more than 121,000 installations and a strong international sales channel of more than 2,000 business partners. The company's main product lines are:

- **Navision Axapta**
(formerly Damgaard Axapta)
- **Navision Financials**
- **Navision XAL**
(formerly Damgaard XAL)

Navision was created through the merger of Navision Software and Damgaard in December 2000. Its shares are listed at The Copenhagen Stock Exchange (CSE: NAVI). The company is headquartered in Vedbaek, Denmark.